



DroneDeploy Deep Dive: Transforming Facility & Property Inspections with Drone Solutions

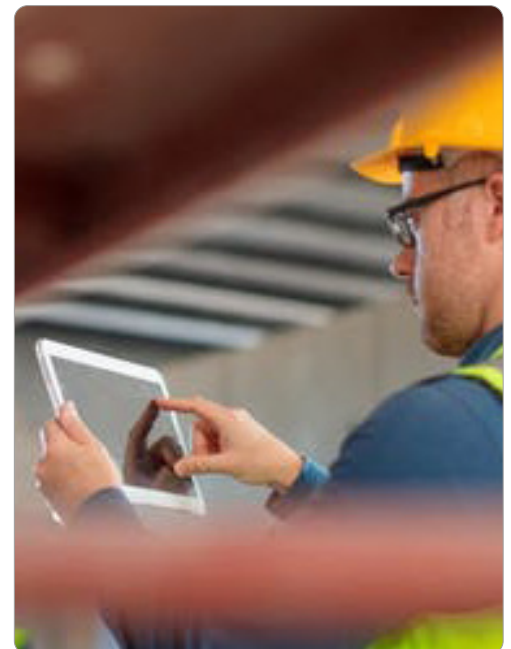
Experience The Benefits of Drone Technology
For Your Organization

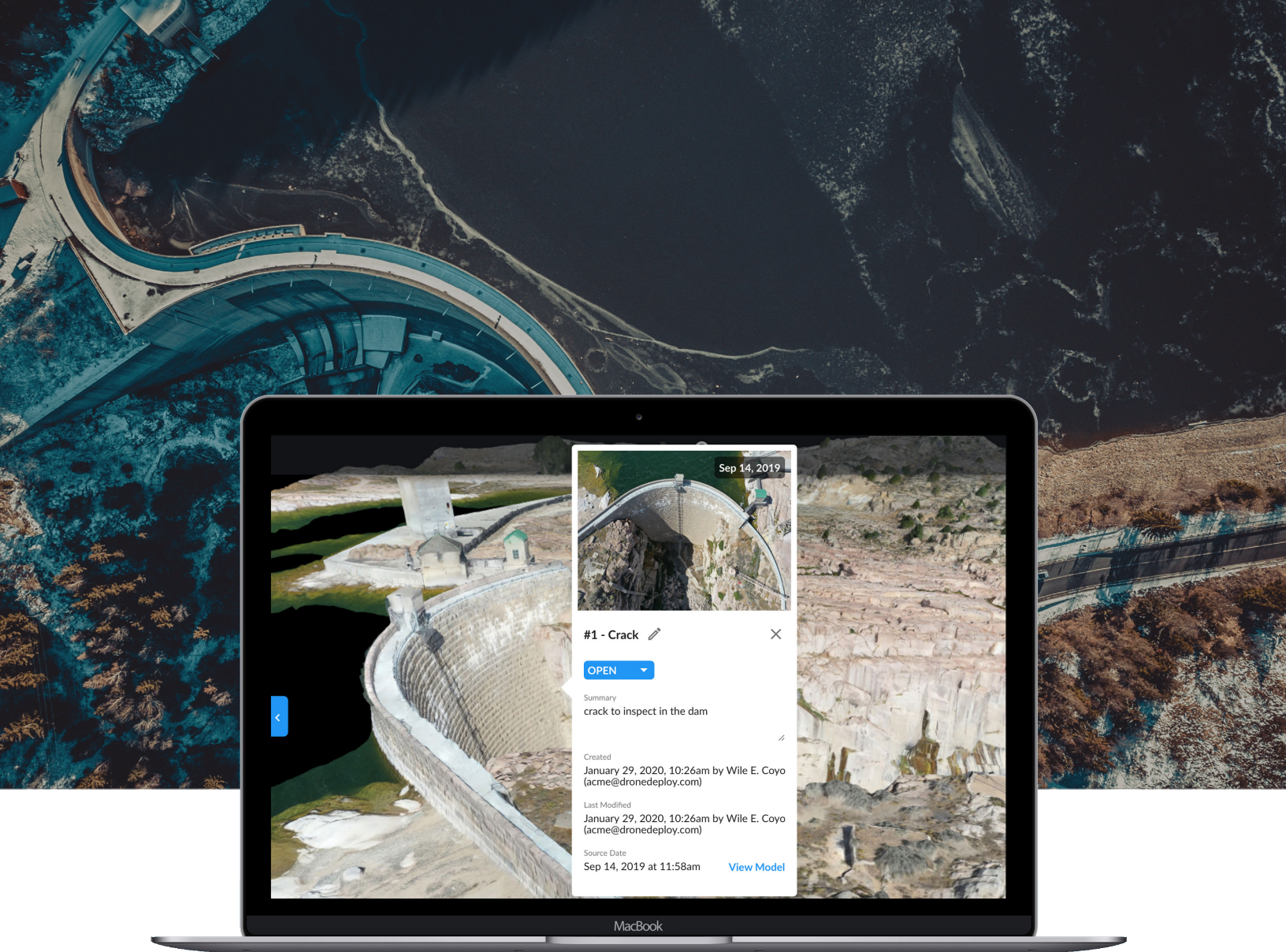


Since the pandemic started, most companies have had to reduce the number of workers it puts on site. But even with operations in flux, weather conditions and other natural elements haven't stopped taking their toll on physical buildings and assets. In this new era of work, the need for quick, accurate inspections has been paramount.

Many property and facilities management companies, therefore, turned to drones as the perfect **socially distant worker**. As these companies waited anxiously for operations to return to normal, they realized something surprising: drone solutions helped maintain their number of inspections, increased the number of properties they oversaw, and reduced worker's time in the field.

Drones proved to be one of the rare ways companies could do more with less – all while keeping workers safe.





The Benefits of Drone Technology for Inspections

The benefits of drones for facility and property **inspections** are numerous. But they all track toward three main pillars; reducing maintenance spend, managing more properties more consistently, and optimizing your workforce.

In the coming months and years, companies will realize that the benefits of drones and drone solutions will not end when the pandemic does. There are tangible, bottom line opportunities that drone technology drives for inspections in the property and facilities management sphere. It's clear that drone technology helps shift the paradigm of how these corporations run inspections, but drones have also transformed how they fundamentally deal with problems. They've moved from being reactive to proactive when it comes to potential issues, and they've capitalized on minimizing costs and safety risks, all while driving up profits.

In conjunction with our eBook, "**Facility Managers' Best Friend: DroneDeploy**", this eBook will take a closer look at how drone software transforms facilities and property management inspections in virtually every way.

How Drone Insights Transform Pavement Inspections



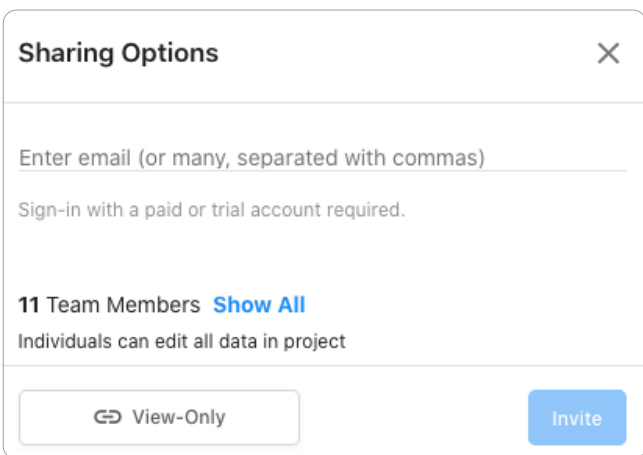
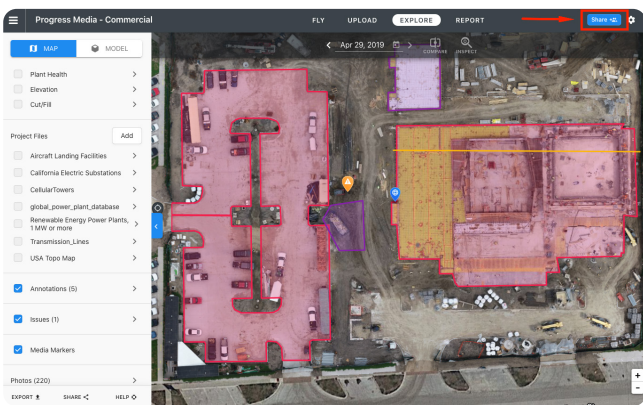
**“You’re the expert.
You tell me what we
need to do.”**

At DroneDeploy, we’ve seen too many companies start an engagement with a contractor with this type of statement. It’s not their fault, however. Until now, there were not many ways for property managers to understand their site’s needs if they were not true experts in roofs, pavement, exteriors, and more.

That’s why, in the past, **pavement inspections** and budgeting for maintenance have been mainly dependent on a sole trusted advisor or contractor. Companies found someone they liked working with and whom they trusted, and they let them dictate the budget and scope of work. DroneDeploy transforms this model by providing unprecedented transparency into every site, making analysis digestible and **shareable**.

To start, drone solutions help companies collect an accurate baseline view of their assets. A baseline is a vital ingredient to measuring the speed of deterioration, tracking problem areas, and benchmarking issues across properties.

“By creating a baseline condition, we can use that data to predict the problems, so we are not just reacting to them,” says Mark Schmidt, President & CEO of Atlas10. “We’re using the benefits of drone inspection...which allow our clients to make objective decisions.”



In the pavement sector, it's becoming increasingly common that companies move from using occasional advisor inspections to more consistent, routine drone inspections. This way, they have a much clearer idea of their pavement, what areas are of concern, and what is causing the problem. Their baseline view lets them know how quickly problems have unfolded and where they might pop up next.

It's no longer practical to look at surfaces through Google Maps - but instead, utilize high resolution distress condition maps, which provide unprecedented detail and insights. Creating a pavement condition index (PCI) empowers users to see pavement conditions down to the foot-by-foot level. This index can inform the repairs you need to make and determine the amount of work that will go into every parking lot or driveway.

This level of detail has a positive impact on budgeting. Using DroneDeploy, customers have a detailed budget and plan for maintenance and repairs – gone is the guesswork. Often in the past, the budget for repairs from the previous year served as the budget for the year ahead, which could be widely off the mark due to unforeseen circumstances. Thanks to drone solutions, companies are no longer reliant on an advisor's expertise to set the scope. Now they can determine the scope based on their own drone data.



How Drone Data Powers Roof Inspections

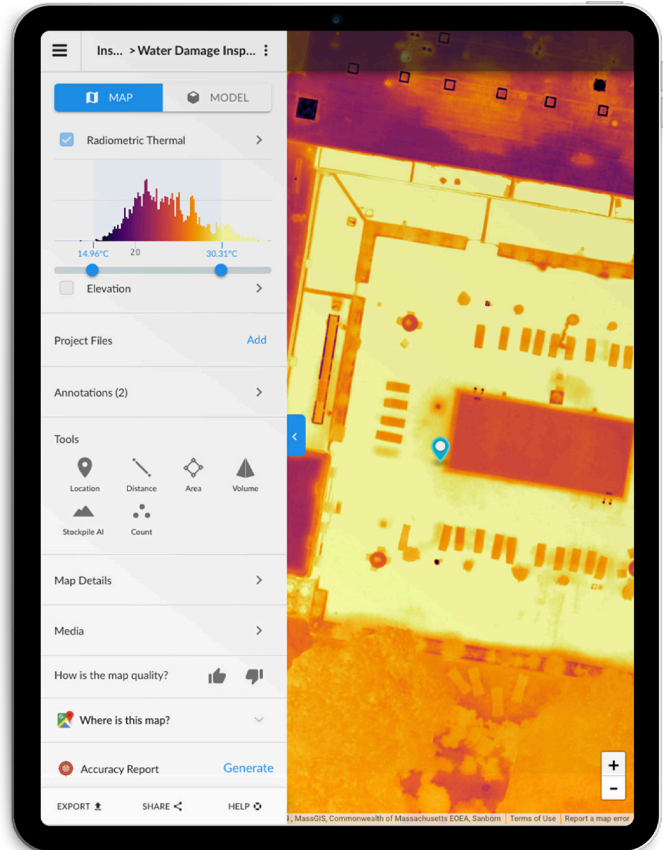
Before, the only way to get detailed insights into your roof was to get “boots on the roofs.” **Thermal Live Map** from DroneDeploy transforms **roof repair** through more accurate insights, more frequent inspections, and a deeper level of analysis and understanding.

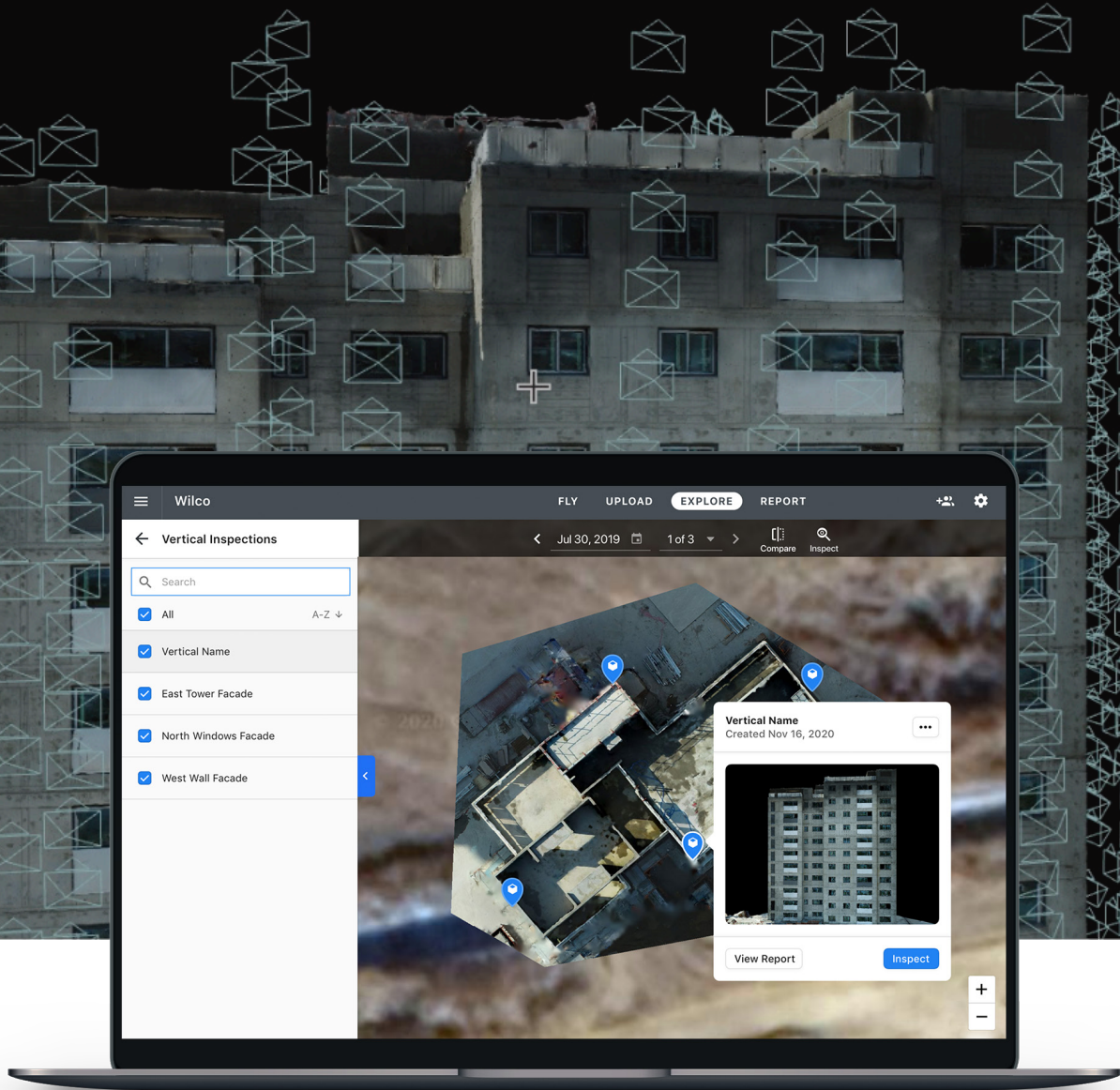
As one can assume, there are numerous problems with getting workers on the roof to conduct inspections. Namely, there is inherent risk when a worker is on a roof and working in hazardous conditions. But it's primarily inefficient in terms of working hours and costs. It's also difficult to conduct these types of inspections regularly, especially across a range of properties.

Many companies in the past have had experts travel to a site and conduct a quarterly **property condition assessment** – but that's extremely costly. DroneDeploy enables customers to fly the same routes as often as they like, repeatedly. Then, these images and maps are automatically uploaded into the DroneDeploy dashboard, where employees can seamlessly comment, **annotate**, and collaborate with all stakeholders – whether it's a contractor, subcontractor, or someone on your facilities team. The result is minimal miscommunication, as you are all working from an updated single source of truth.

“You factor the price of hopping on a plane, flying cross country, to go walk on a roof – and you think about what it costs to do [a drone inspection]... DroneDeploy is the perfect solution,” said Daniel Kilman, President of Pavecon.

Meanwhile, **thermal imaging** from DroneDeploy provides customers with a deeper level of understanding – literally. **Thermal mapping** empowers clients to understand where problem areas are, even below the top layer of the roof. Plus, **thermal imaging** can often detect leaks or water erosion invisible to the naked eye.





How Drones Help You Understand Exterior Conditions

There are very few exterior parts of a building that are inaccessible to drones. If a drone can see it, facilities and property management companies can understand the conditions of the siding, roof, pavement, **facades**, and more.

DroneDeploy's **Vertical Flight** mode has made it possible to capture building exteriors with far greater detail. Previously, companies had to put up layers of scaffolding to examine their building's sides. Now customers can gain high-resolution images of exterior sides, paneling, facades – anything that top-down photography might not capture – in a fraction of the time using traditional methods. This can also make renderings turn into realistic **3D models**, arming decision makers with the most holistic imagery and insights.

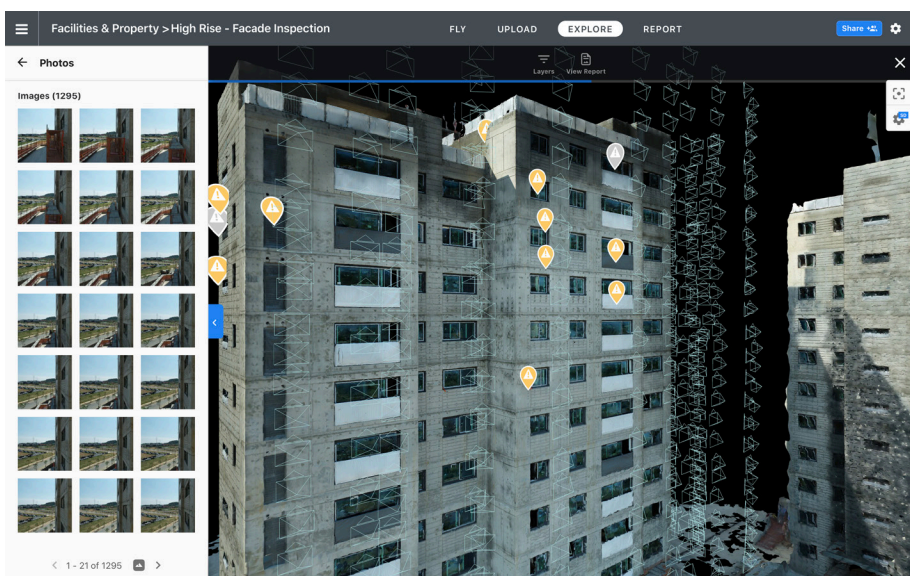
Vertical Flight has enabled DroneDeploy customers to better understand issues from everything to waterproofing, lighting, signage, pain fencing, retention ponds, and more. These images are so exact that companies can analyze the quality of paint, ascertain cracks or leaks within brick and mortar, and even determine if fencing is rotting. This is all analyzed in-app or on a desktop and compared against

“Vertical Flight has enabled DroneDeploy customers to better understand issues from everything to waterproofing, lighting, signage, pain fencing, retention ponds, and more.”

industry regulations or building codes. This type of work exemplifies how DroneDeploy streamlines workflows by eliminating the need to jump between multiple platforms for analysis.

Organizations can rest assured that they have all the latest information about their buildings and know that they are compliant and up to code. Armed with this insight, they can take preventative measures to maintain their structures. It’s clear that drones are much faster than manual inspections, cost significantly less, increase safety, and provide easy shareability and collaboration.

In the coming years, we’ll see a lot more drones in the sky and a lot less scaffolding when it comes to exterior inspections.



DroneDeploy: An All in One Solution

For **facilities and property management** teams, DroneDeploy is a gamechanger. The solution delivers an objective analysis of every property so that users can develop a precise budget. Customers can then score and rank each property based on site conditions and accurately manage cash flow or predict costs.

More importantly, customers save time for their employees, take preventative action before problems get more costly, and spend millions less on annual maintenance. Through drone inspections, decision makers become more strategic: managing more effectively, lowering costs, determining measurable outcomes, optimizing assets, and driving unparalleled ROI.

If you're interested in learning more about drone technology within facilities, watch our **webinar** on getting started with drones in property management, or **get in touch** with one of our experts.



DroneDeploy is the leading enterprise-grade site reality platform. Trusted by brands globally, our software converts job sites, structures, and assets into easy-to-understand digital representations, generating valuable insights for industries including construction, energy, and agriculture. Through mapping, 3D modeling, analysis, and reporting, we provide a detailed and accurate digital replica of any asset, enabling our customers to take action, save time, and lower unforeseen costs.